

NEW



AGRI LOADALL | 531-70/535-95/536-60/536-70LP/536-70/541-70

Gross power: 81kW/109hp – 108kW/145hp Lift capacity: 3,100kg – 4,100kg Lift height: 6,200mm – 9,500mm



HANDLING IT ALL WITH EASE.

SINCE JCB FIRST PIONEERED THE IDEA OF THE TELESCOPIC HANDLER BACK IN 1977, WE'VE BEEN PRODUCING MACHINES THAT CAN HANDLE THE TOUGHEST AGRICULTURAL TASKS WITH REASSURING EASE. OUR LATEST RANGE OF AGRI LOADALLS FOLLOWS IN THIS TRADITION, OFFERING A SELECTION OF MODELS DESIGNED SPECIFICALLY TO PROVIDE TOTAL PRODUCTIVITY.

JCB AGRI Loadalls.

Part of our development process involved extensive customer input, meaning that any AGRI Loadall will be packed with innovative design elements to take on the uniquely challenging worksites of farming.

Power, manoeuvrability, efficiency, durability, comfort, safety and cost-of-ownership are all therefore large parts of the package. Likewise the award-winning T4i JCB EcoMAX engine, built to provide ultimate performance without high fuel bills or costly exhaust after-treatment.

Because we offer such a wide range of AGRI Loadall models, you can always find a perfect machine for any agricultural requirement.

All of which makes it hardly surprising that JCB sells more telescopic handlers than any other manufacturer in the world today. So if you're looking for a machine that can handle it all, there really is only one choice: a JCB AGRI Loadall.

* Assumes 1000hrs per year 72 pence per litre and JCB's mixed duty cycle (unless stated otherwise). The data and potential fuel efficiency savings are based on JCB research figures. The figures are only intended to give an indication of potential saving and should not be taken as actual savings. JCB reserve the right to change and amend data.

Efficiency

- NEW** 34%* fuel saving when load placing.
- NEW** 15%* efficiency saving on rehandling.
- NEW** 5%* efficiency savings and are versus T4i machines pre the new agricultural updates details (£1,620 over 3yrs).
- NEW** 18%* efficiency savings and are versus T3 machines pre the new agricultural updates details (£6,257 over 3yrs).
- NEW** Regenerative hydraulics save 5%* fuel consumption.

Productivity

- NEW** Up to 19%* productivity improvement.
- NEW** Auto Smooth Ride System (SRS) option.
- NEW** LED cab and boom worklight options.
- NEW** Boom hydraulic damping lift and retract.
- NEW** Increased diameter pipework.
- NEW** Range of Rockinger hitches.

Ease of use

- NEW** Hitch worklight and LED option.
- NEW** hydraulic auxiliary venting.
- NEW** bucket control feature.
- Selectable transmission dump on foot brake.
- Low profile engine bonnet.
- Improved upward air expulsion.

Comfort

- Instruments with hi-res TFT screen.
- Reduced external noise levels.
- 7-speed ventilation fan.

Cost of ownership

- JCB EcoMAX T4i/IIIB engine no DPF required.

HANDLING IT ALL WITH EASE



ULTIMATE PERFORMANCE, ULTIMATE PRODUCTIVITY.

DESIGNED TO MEET AGRICULTURAL DEMANDS, JCB'S LATEST AGRI LOADALL RANGE OFFERS UNPARALLELED PRODUCTIVITY, COURTESY OF REGENERATIVE HYDRAULICS, SUPERLATIVE PERFORMANCE, VERSATILITY AND EFFICIENCY. EXACTLY WHAT YOU'D EXPECT FROM THE WORLD'S NO. 1 TELEHANDLER MANUFACTURER.

With power and torque delivered at low engine speeds, the JCB EcoMAX T4i engine offers great responsiveness.

Variable geometry turbo (VGT) technology minimises lag for excellent performance at low revs. VGT also delivers excellent speed pick-up and superior efficiency at higher revs.

A productive machine.

- 1 A JCB AGRI Loadall is extremely manoeuvrable; the compact wheelbase and large steering lock angles save you valuable time on the farm, especially where space is limited.
- 2 4WD is standard, so traction is assured at all times. 2WD is available at the flick of a switch too, minimising tyre wear and fuel use when roading. For improved performance on difficult terrain, opt for limited slip diffs.

Productive lifting and hydraulics.

- 3 Regenerative hydraulics help to ensure the very fastest cycle times, keeping farm output high.
- 4 Auto Smoothride System (SRS) engages at speeds of over 4km/h. This improves load retention and comfort (and, in turn, productivity) when travelling at speed on roads and fields. The system can now be manually engaged with the boom in any position.
- 5 The JCB quickhitch feature makes attachment-changing quick and easy – coupling options include JCB Q-fit, pin and cone, and industrial.



Productive controls.

6 JCB's auto bucket control technology makes it easier to meter out or fully empty material from your bucket or muck fork via a feature button on the joystick. Material is ejected quickly and in a controlled way.

7 AGRI Loadalls have three selectable steer modes. There's two wheel steer, which is ideal for travelling at high speed on the road; four-wheel steer for working in tight spaces; and crab steer for manoeuvring close to walls and farm buildings. Operators can switch modes on the move without having to line the wheels up.

8 Joystick-mounted manual or automatic gear changes on all models means you can shift gears, speed and direction quickly and easily with one ergonomic control.

9 AGRI Loadalls are fitted with auxiliary spools as standard, ensuring they can be used with a wide range of attachments, ensuring maximum versatility. The cab now boasts a pressure release button for the front and rear hydraulic auxiliary services too. Constant flow auxiliary fitted as standard.



A selectable transmission dump on the foot brake provides superb multi-functioning and increased engine speeds during loading or rehandling. Braking is smooth and responsive, with all-wheel servo assistance.



A SOUND INVESTMENT.

WE'VE DESIGNED THE JCB AGRI LOADALL RANGE TO PROVIDE SUPREME EFFICIENCY DURING OWNERSHIP AND AGRICULTURAL OPERATION. ALL MACHINES OFFER SUPERIOR RETURN ON INVESTMENT. GREAT FUEL EFFICIENCY AND UNPARALLELED RESALE VALUE, SO LOW RUNNING COSTS ARE A GIVEN.

EcoMAX efficiency.

1 The 81kW/109hp, 93kW/125hp and 108kW/145hp JCB EcoMAX engines are fitted with a variable speed cooling fan that automatically reacts to ambient temperatures, adjusting fan speed to maximise fuel efficiency and reduce in cab noise levels.

Because the JCB EcoMAX engine doesn't use exhaust after-treatment, in turn, you save on servicing costs.

2 JCB AGRI Loadalls are products of our Efficient Design programme, the upshot of which is that you can expect up to 18% fuel savings over our Tier 3 models.

3 The engine can be remapped to run on lower-grade fuels, which means your machine can be resold across many different territories, with a corresponding boost to residual values.

4 An LED screen on the dash provides operators with useful information for efficient running, like fuel remaining, fuel used since last fill, and current average fuel consumption figures.

By producing high levels of power and torque even at engine speeds as low as 1300 – 1400rpm, the JCB EcoMAX can provide fuel-efficient, smooth matching of transmission and hydraulics.

JCB's innovative Clean Burn technology helps our engines to meet Tier 4 Final regulations without exhaust after-treatments like DPFs. This means, of course, that costly DPF regeneration or replacement is never a worry.



Reducing ownership costs.

E Innovative all-new hydraulic regeneration technology helps to make the most of every drop of precious fuel. Gravitational forces are harnessed to make boom lowering and retraction more energy-efficient than ever.

E JCB Loadalls enjoy huge global demand due to legendary productivity and build quality levels – resale values have always been correspondingly strong.

Z AGRI Super Loadalls are fitted with TorqueLock in 5th and 6th gears for greater speed, quicker journey times between farm and field, and reduced fuel consumption when roading.

High back-off brakes reduce viscous drag during roading and rehandling, which improves fuel economy by up to 2%.

E Our security system is Thatcham-approved (depending on territory), so you could benefit from reduced insurance premiums.



5

HYDRAULIC CYCLE TIMES (541-70 AGS UNLADEN)	
	Seconds
Lift	5
Lower	5.2
Extend	6.7
Retract	5
Bucket dump	2.9
Bucket crowd	2.3



6



7

STRENGTH AND DURABILITY.

WE UNDERSTAND THAT AGRICULTURAL WORK CAN BE INTENSIVE AND ARDUOUS. IT'S FOR THIS REASON THAT AGRI LOADALLS ARE BUILT TO BE AS TOUGH AS POSSIBLE, USING TOP QUALITY COMPONENTS AND INNOVATIVE MANUFACTURING PROCESSES. YOU CAN THEREFORE EXPECT A LONG AND PRODUCTIVE SERVICE LIFE FROM YOUR MACHINE.

Tough boom design.

1 Ultimate strength and durability is assured with large boom overlaps of over 1.0m.

Hydraulic hoses can be vulnerable to damage, so ours are intelligently routed through the boom for maximum protection.

Built-in protection.

2 Bonnets are protected from damage by being side-mounted and recessed.

3 AGRI Loadalls with a lift height of 7m or more come equipped with fold-up rear lights that can be kept clear and well protected from typical farm damage.

4 Front and top screen roof guards for added protection from falling debris whilst lifting at height are an option.

5 Heavy-duty axle feet help to absorb the immense stresses generated during continuous heavy material rehandling.



A tough inverted U-shaped boom pressing with fully welded closing plates provides superior strength; we've also reduced the number of joints and stress points across our integrated boom nose and one-piece closing plate.



The one-piece fully welded chassis maximises strength and minimises weight. For maximum structural rigidity, the boom on an AGRI Loadall is mounted low in the chassis. This guarantees superior over-the-shoulder visibility.



Durable components.

6 The AGRI Loadall range's stringent testing programme has included high stress loading of the chassis, boom and other key components, as well as repeated transmission use over thousands of typical agricultural work cycles, and prolonged use on our new rolling road facility.

7 The centrally mounted lift, tilt and extension rams eliminate twisting and are held in place by centrally-mounted keyhole castings for even greater structural integrity.

8 At JCB, we make our own hydraulic cylinders, cabs, axles, transmissions and engines – all designed to work in perfect harmony for optimum reliability.

We now offer a range of robust Rockinger hitches, to maximise the towing potential of our Loadalls across Europe.

To ensure reliability of our JCB EcoMAX engines, we've tested units for 110,000 hours in 70 different machines across the toughest applications and environments.



To provide long-term protection, we dip every AGRI Loadall cab in electrophoretic alloy before painting it.



A SLICK OPERATION.

FOR AN AGRICULTURAL MACHINE TO PROVIDE MAXIMUM PRODUCTIVITY, IT NEEDS TO BE INTUITIVE AND COMFORTABLE TO OPERATE ACROSS A WIDE VARIETY OF CONDITIONS AND CLIMATES. THE JCB AGRI LOADALL RANGE PROVIDES THE MOST ERGONOMIC WORKING ENVIRONMENT AROUND, WITH FEATURES APLENTY TO HELP KEEP OPERATORS FOCUSED ALL DAY LONG.

Ergonomic controls.

- 1 For ergonomic, fast and precise control, AGRI Loadalls are fitted with a fully proportional single lever servo control system.
- 2 Backlit switches ensure quick and accurate control recognition, even in the dark.
- 3 All operators from novices to experts will find JCB Loadalls easy to use; the cab interior is designed to be intuitive and uncomplicated, with clear instruments and a familiar automotive-style control layout.
- 4 To tailor your Loadall to any driving style, choose the easily adjustable tilting telescopic steering column.



Comfort and convenience.

E To keep operators comfortable and focused, our 7-speed fan heater can help create the right working temperature all year round, from the depths of winter to hot harvesting days. Optional air conditioning makes it even easier to find the perfect cab temperature.

E We now offer front, rear and boom LED worklight options to optimise visibility at night or in other darkened operating areas like outbuildings. We've recently added a useful LED hitch light to our options list too.

Z All-round visibility on an AGRI Loadall is excellent, courtesy of direct glazing and a large roof screen, as well as a low bonnet.

E We've made it possible to close the upper door from outside thanks to an exterior top door slam latch.

An AGRI Loadall's standard-fit tinted cab glass will reflect 30% of the sun's energy for enhanced operator comfort.



The aggressive exterior styling of these machines isn't purely cosmetic; the cooling fan airflow is now angled upwards, redirecting airflow through the top of the bonnet reducing dust.



6



7



7



8

SAFETY AND SECURITY.

JCB AGRI LOADALLS ARE EQUIPPED WITH A NUMBER OF STRINGENT SAFETY MEASURES TO HELP GUARD AGAINST ACCIDENTS. THERE'S ALSO A HIGH LEVEL OF SECURITY TECHNOLOGY INSTALLED.

Protecting people.

- 1 Excellent cab access, with three points of contact and ergonomically positioned grabs, handles and foot step.
- 2 Hose burst check valves on the rams prevent collapse if a hose fails.
- 3 The low boom profile and low boom pivot make for superb rear and all round visibility.
- 4 Standard fitment of a reverse alarm to all AGRI Loadalls.
- 5 Adaptive Load Control technology automatically controls hydraulic operation, helping to maintain the longitudinal stability of these machines.

Depending on territory, our Loadall security system is Thatcham-approved. The package comprises a Cesar Datatag (on UK vehicles), a JCB LiveLink telematics vehicle tracker, and an immobiliser.

The JCB factory-fit immobiliser system can either be activated by a unique key or an optional keypad PIN mechanism. The system automatically arms itself after a set time following engine shutdown.



Accidental operation is a thing of the past with our operator presence switch; this feature prevents vehicle movement whenever drivers leave their seats.

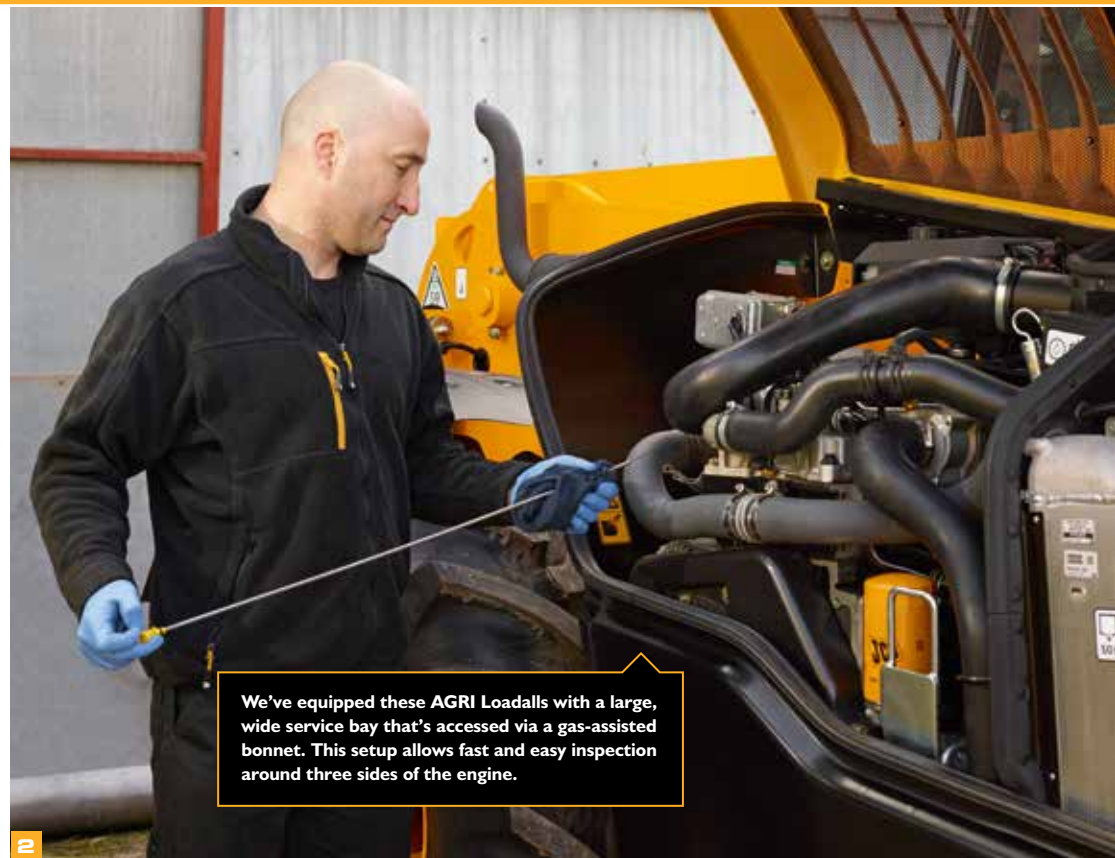


LESS SERVICING, MORE SERVICE.

THE RIGOURS OF FARMING ARE SUCH THAT A TELEHANDLER NEEDS TO SPEND AS MUCH TIME AS POSSIBLE AT WORK, NOT BEING WORKED ON. SO JCB LOADALLS HAVE LONG SERVICE INTERVALS AND, WHEN MAINTENANCE DOES NEED TO BE CARRIED OUT, IT'S AN EASY AND QUICK PROCESS.

Maintaining productivity.

- 1 Most Tier 4i engines use a Diesel Particulate Filter (DPF) or SCR, requiring additional AdBlue fluid level maintenance – JCB EcoMAX doesn't.
- 2 All daily checks and greasing can be carried out at ground level; our centralised greasing system makes for quicker and easier servicing.
- 3 You can access an AGRI Loadall's battery easily (and without specialist tools) via a lockable cover that's opened with the ignition key.
- 4 The diesel tank is also easy to get to, and can be filled from ground level. For protection from dirty fuel, there's an integral pre-filter in the filler neck.
- 5 A dry lubricant system means our wear pads are extremely durable, with service intervals of 500 hours.
- 6 Every fluid filter (engine oil, hydraulic oil and fuel) is centrally located for fast, easy servicing. The air filter is easily accessed too, and its double-element design simplifies cleaning.

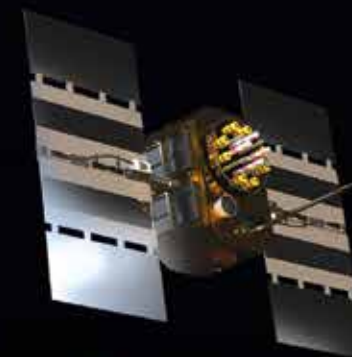


LIVELINK, WORK SMARTER.

LIVELINK IS AN INNOVATIVE SOFTWARE SYSTEM THAT LETS YOU MANAGE JCB MACHINES REMOTELY – ONLINE, BY EMAIL OR BY MOBILE PHONE. ACCESS EVERYTHING FROM MACHINE ALERTS TO HISTORY INFORMATION, WITH ALL DATA STORED AT A SECURE CENTRE.

Productivity and cost benefits

All LiveLink equipped Tier 4i Loadall machines built are now able to report fuel economy, idle time and engine load data through the LiveLink web portal, helping you reduce your fuel usage, saving you money and improving productivity. Machine location information can help improve efficiency and perhaps even reduce insurance costs.



Maintenance benefits

Manage machine maintenance easily – accurate hours monitoring and service alerts improve maintenance planning, while real-time location data helps you manage your fleet. Critical machine alerts and maintenance history records are also available.



Security benefits

LiveLink's real-time geofencing alerts tell you when machines move out of predetermined zones, and real-time curfew alerts inform you of unauthorised usage. Further benefits include real-time location information, advanced ECU matching (pairs LiveLink with the immobiliser or ECU).



VALUE ADDED.

JCB'S WORLDWIDE CUSTOMER SUPPORT IS FIRST CLASS. WHATEVER YOU NEED AND WHEREVER YOU ARE, WE'LL BE AVAILABLE QUICKLY AND EFFICIENTLY TO HELP MAKE SURE YOUR MACHINERY IS PERFORMING TO ITS FULL POTENTIAL.



1

1 Our Technical Support Service provides instant access to factory expertise, day or night, while our Finance and Insurance teams are always on hand to provide fast, flexible, competitive quotes.

2 The global network of JCB Parts Centres is another model of efficiency; with 15 regional bases, we can deliver around 95% of all parts anywhere in the world within 24 hours. Our genuine JCB parts are designed to work in perfect harmony with your machine for optimum performance and productivity.

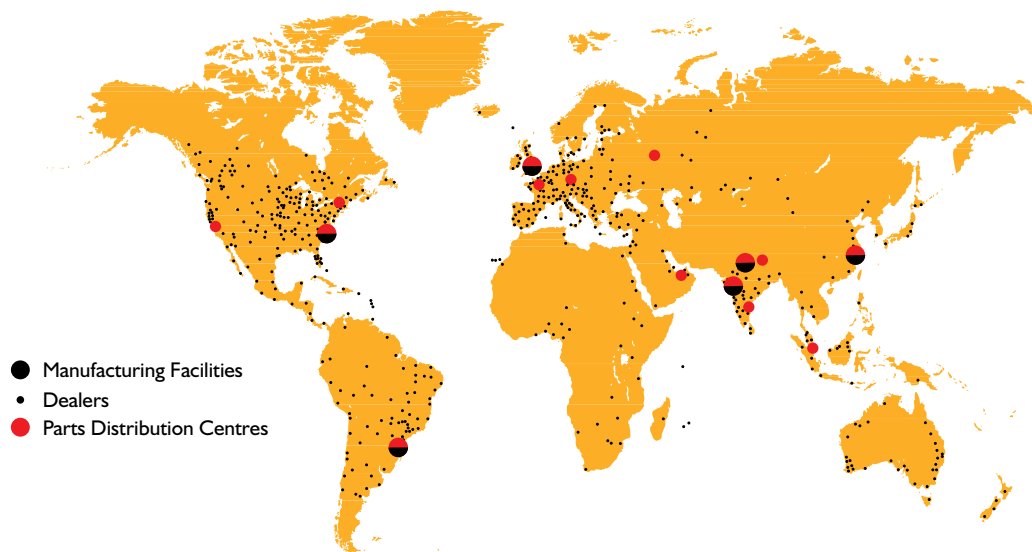


2

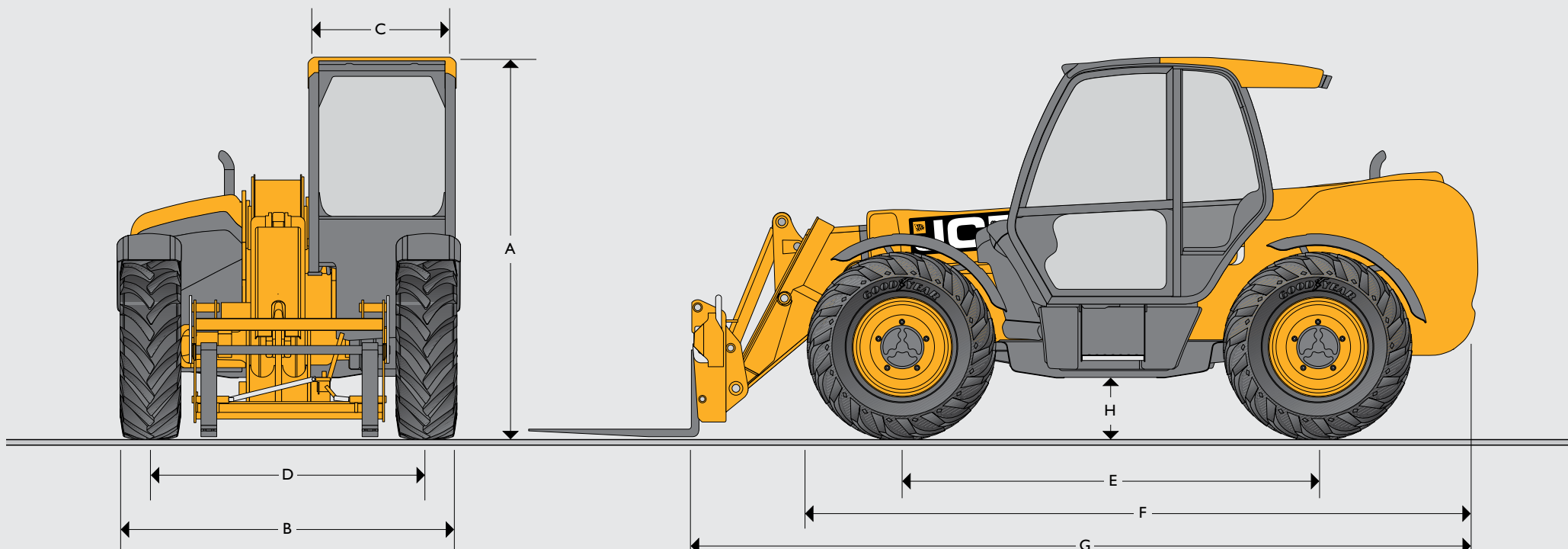
3 JCB Assetcare offers comprehensive extended warranties and service agreements, as well as service-only or repair and maintenance contracts. Irrespective of what you opt for, our maintenance teams around the world charge competitive labour rates, and offer non-obligation quotations as well as fast, efficient insurance repair work.



3



- Manufacturing Facilities
- Dealers
- Parts Distribution Centres



STATIC DIMENSIONS

Machine model		531-70	535-95	536-60	536-70LP	536-70	541-70
A Overall height	m	2.49	2.49	2.49	2.33	2.49	2.49
B Overall width (over tyres)*	m	2.29	2.36	2.29	2.29	2.29	2.29
C Inside width of cab	m	0.94	0.94	0.94	0.94	0.94	0.94
D Front track	m	1.81	1.87	1.81	1.81	1.81	1.81
E Wheelbase	m	2.75	2.75	2.75	2.75	2.75	2.75
F Overall length to front tyres	m	4.38	4.38	4.03	4.38	4.38	4.38
G Overall length to front carriage	m	4.99	4.99	4.55	4.99	4.99	4.99
H Ground clearance	m	0.4	0.4	0.4	0.4	0.4	0.4
Outside turn radius (over tyres)	m	3.7	3.7	3.7	3.7	3.7	3.7
Carriage rollback angle	degrees	42.6	41	42.6	42.6	42.6	42.6
Carriage dump angle	degrees	37.5	24	42.5	37.5	37.5	37.5
Weight	kg	6900	8020	7200	7840	7800	7800
Tyres		460/70 R24	445/70 R24	460/70 R24	460/70 R24	445/70 R24	445/70 R24

Machine shown with optional roof mounted air conditioning fitted on Agri Plus and Agri Super.

*Dependant upon tyre specified.

LIFT PERFORMANCE

Machine model		531-70	535-95	536-60	536-70/536-70LP	541-70
Maximum lift capacity	kg	3 100	3 500	3 600	3 600	4 100
Lift capacity to full height	kg	2 400	1 600	3 600	2 500	2 500
Lift capacity at full reach	kg	1 250	500	1 500	1 350	1 500
Lift height	m	7	9.5	6.2	7	7
Reach at maximum lift height	m	0.48	2.43	0.87	0.48	0.48
Maximum forward reach	m	3.7	6.52	3.3	3.7	3.7
Reach with 1 tonne load	m	3.7	5.08	3.3	3.7	3.7
Placing height	m	6.3	8.78	5.42	6.3	6.3

Complies with stability test EN 1459 Annex B.

ENGINE

Machine model		531-70 / 535-95 / 536-60 / 536-70LP / 536-70 / 541-70	531-70 / 535-95 / 536-60 / 536-70LP / 536-70 / 541-70
Emissions level		Stage IIIb / Tier 4i	Stage IIIb / Tier 4i
Model		Agri	Agri Plus / Agri Super
Manufacturer		JCB	JCB
Displacement	ltr	4.4	4.4 / 4.8
No. of cylinders		4	4
Bore size	mm	103	103 / 106
Stroke	mm	132	132 / 135
Aspiration		Turbocharged cooled	Turbocharged cooled
Power rating			
Power @ 2200rpm	kW (hp)	81 (109)	93 (125) / 108 (145)
Torque rating			
Torque @ 1300rpm	Nm	—	—
Torque @ 1500rpm	Nm	516	550 / 560

TRANSMISSION	<p>Stage IIIb / Tier 4i</p> <p>Agri / Agri Plus: JCB powershift transmission incorporating torque converter, bevel box and a 4-speed powershift gearbox in one resiliently mounted unit. Manual gear shift incorporated onto the single lever joystick with 4 forward and 4 reverse powershift gears. Travel speed 33kph. Permanent 4-wheel drive. Switchable transmission disconnect on brake pedal. Agri Super: JCB 6-speed transmission incorporating torque converter, bevel box and 6-speed powershift gearbox with TorqueLock in 5th and 6th gear in one resiliently mounted unit. 2 operating modes: Manual and Auto. Travel speed 40kph. Electrical 2/4 wheel drive select. Gear shift on single lever joystick. Auto selection between 4th and 6th gear in auto mode. Switchable transmission disconnect on brake pedal. Front and rear drive axles: JCB epicyclic hub reduction drive/steer axles with Max-Trac torque proportioning differential.</p> <p>Front and rear drive axles: JCB epicyclic hub reduction drive/steer axles with Max-Trac torque proportioning differentials.</p>
BRAKES	<p>Service brakes: Hydraulically activated, self-adjusting, oil-immersed in-board high back-off multi-disc type on front axle.</p> <p>Parking brake: Hand-operated disc brake on output of gearbox (93kW/125hp, 108kW/145hp - oil immersed disc type).</p>
BOOM AND CARRIAGE	<p>Boom is manufactured from high tensile steel. JCB Q-fit self-levelling carriage with lever operated pin locking accepts pallet forks and a wide range of attachments.</p>
STEERING	<p>Hydrostatic power steering with power track rods on both axles.</p>

DELUXE CAB	<p>Quiet, safe and comfortable cab conforms to ROPS ISO 3471 and FOPS ISO 3449. Tinted glass all round with laminated front and roof screen. Roof bars, front, rear and roof screen wash/wipe and heater/screen demister. Opening rear window. Audio-visual warning system for coolant temperature, water in fuel, engine oil pressure, air cleaner, battery charge, transmission oil temperature and pressure. Hourmeter and road speed indicator. Engine temperature, fuel gauge and clock. Adjustable steer column with stalk bar powershift change and forward reverse shuttle. Throttle and brake pedal floor mounted. Adjustable deluxe suspension seat with adjacent park brake. Automatic eye level audio-visual load moment indicator warning system receiving a signal from a load sensor on the rear axle. This system continuously monitors the machine's forward stability and leaves the operator in control at all times.</p> <p>Hydraulic controls:</p> <p>Agri/Plus/Super: Cab mounted single lever servo joystick, incorporating forward/neutral/reverse, with progressive extend/retract and auxiliary incorporating constant flow facility.</p>
OPTIONS AND ACCESSORIES	<p>Options: Front and rear working lights, rotating flashing beacon, fire extinguisher, radial industrial tyres, electrical 2/4WD select, limited slip differential in front axle, windscreen and roof guard, air suspension seat, roof and front screen blind, radio kit, air conditioning, reversing fan, 2 speed and intermittent front wash/wipe, high flow auxiliary, smoothride system, towing facility with trailer lighting package, carriage options available – contact your local dealer. Clean air kit.</p>

OPTIONS			
Model	531-70, 536-60, 536-70LP, 536-70, 541-70	535-95	541-70
Sub model	Agri / DS, Agri Plus / DS + Agri Super	Agri / DS, Agri Plus / DS + Agri Super	BIOMASTER
Standard features			
Regenerative hydraulics (lower and retract)	●	Lower only	●
End damping (lift and retract)	●	Lift only	●
Quick aux venting	●	●	●
Increased diameter pipework lift/lower and extend/retract- 1/2" to 5/8"	●	Lift/lower only	●
Bucket control system	●	●	●
Options			
Auto SRS	Standard: Agri Super	Standard: Agri Super	○
Rockinger hitch range (6 types)	○	○	○
LED work lights (front and rear)	○	○	●
LED boom works lights (boom)	○	○	●
Rear hitch light	Standard: if hitch selected	Standard: if hitch selected	Standard: if hitch selected
LED rear hitch light	Option: if hitch selected	Option: if hitch selected	Option: if hitch selected
BIOMASTER			
Auto reversing fan	○	○	●
Boom nose cover	○	○	●
Airconditioning	○	○	●
Clean air kit	○	○	●
Remote greasing	○	○	●

● Standard

○ Option

HYDRAULICS						
		531-70	535-95	536-60	536-70/536-70LP	541-70
Model		Agri / Agri Plus / Agri Super	Agri / Agri Plus / Agri Super	Agri / Agri Plus / Agri Super	Agri / Agri Plus / Agri Super	Agri / Agri Plus / Agri Super
Operating system pressure	bar	241	241	260	260	260
Main hydraulics	l/min	140	140	140	140	140
Pump		Variable	Variable	Variable	Variable	Variable
Hydraulic cycle times		Seconds	Seconds	Seconds	Seconds	Seconds
Lift		4.5	5.6	5.7	5	5
Lower		5.7	6.3	5.7	5.2	5.2
Extend		6.7	9.4	5.9	6.7	6.7
Retract		5	10	4.8	5	5
Bucket dump		2.9	1.9	2.7	2.9	2.9
Bucket crowd		2.3	2.5	2.1	2.3	2.3

SERVICE CAPACITIES			
Fuel tank	litres		146
Hydraulic tank	litres		113
Coolant	litres		23
Fuel tank 536-70LP	litres		125

ELECTRICAL SYSTEM			
System voltage	Volt		12
Alternator	Amp/hour		80
Battery capacity	Amp/hour		62



ONE COMPANY, OVER 300 MACHINES.

Your nearest JCB dealer

AGRI LOADALL 531-70/535-95/536-60/536-70LP/536-70/541-70

Gross power: 81kW/109hp – 108kW/145hp

Lift capacity: 3,100kg – 4,100kg Lift height: 6,200mm – 9,500mm

JCB Agriculture, Rokester, Staffordshire, United Kingdom ST14 5JP.

Tel: +44 (0)1889 590312 Email: salesinfo@jcb.com

Download the very latest information on this product range at: www.jcb.com

©2009 JCB Sales. All rights reserved. No part of this publication may be reproduced, stored in a retrieval system, or transmitted in any form or by any other means, electronic, mechanical, photocopying or otherwise, without prior permission from JCB Sales. All references in this publication to operating weights, sizes, capacities and other performance measurements are provided for guidance only and may vary dependant upon the exact specification of machine. They should not therefore be relied upon in relation to suitability for a particular application. Guidance and advice should always be sought from your JCB Dealer. JCB reserves the right to change specifications without notice. Illustrations and specifications shown may include optional equipment and accessories. The JCB logo is a registered trademark of J C Bamford Excavators Ltd.

